

## SILICONE RUBBER FOR INSULATOR

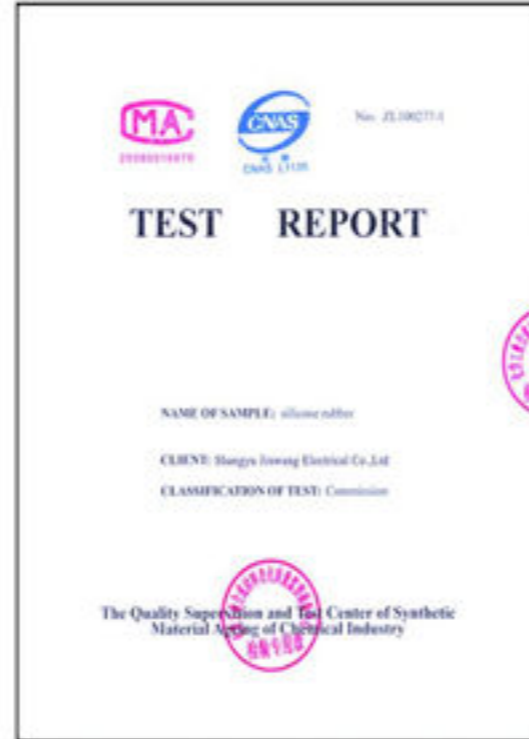
Silicone Rubber is used for making composite products by molding & injection technology.

### Features

- High dielectric strength
- Excellent tracking resistance
- Excellent surface hydrophobicity

### Applications

- High Voltage Insulators
- Surge Arrester

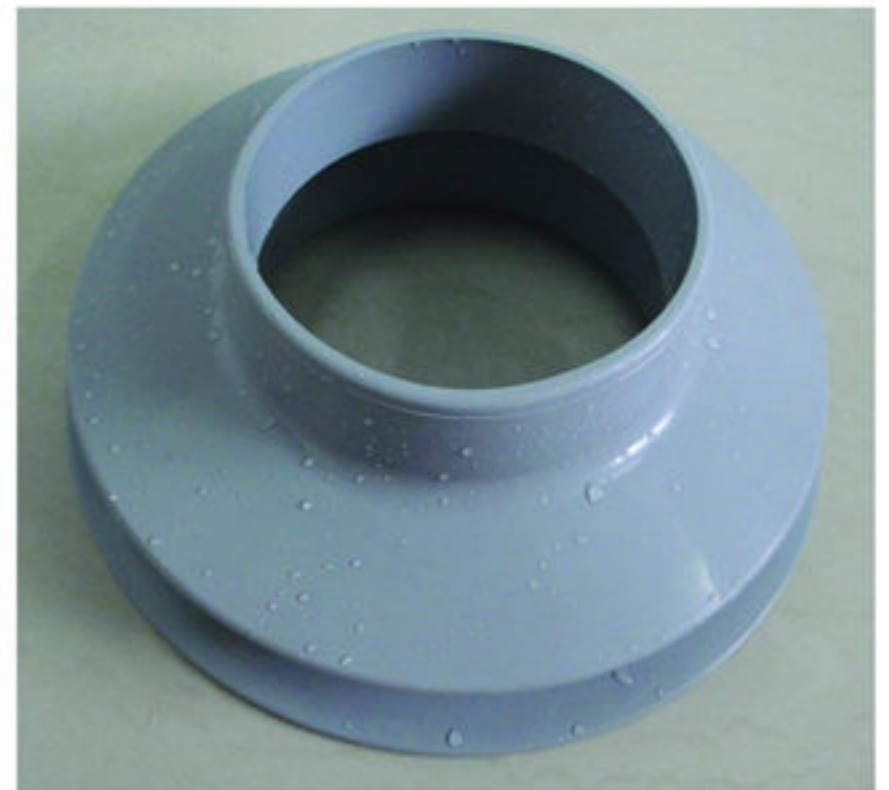


## INSULATOR SHED RIB

Insulator sheds could be assembled by a special method onto fiberglass core rod to make a complete insulator.

Inner/Outer Shed Diameter	Φ80/Φ210 (mm)	Φ135/Φ270 (mm)	Φ170/Φ296 (mm)
------------------------------	------------------	-------------------	-------------------

Note: Other shed (inner & outer) diameter can be met.



## HDPE(POLYETHYLENE) SPACER

Used as splitter for protected cables in distribution nets.

### Features

- Anti UV protection
- Made of high density polyethylene
- High resistance to traction and impact
- Applied to electrical tension of 15 to 45 kV



## HDPE(POLYETHYLENE) WAD PROTECTOR

The protector is installed in wad distribution transformers of 15 to 45 kV and lightning arrester.

### Features

- Anti UV protection
- Made of high density polyethylene.
- High resistance to traction and impact

Note: OEM order of different HDPE products can be met.

